



Utility High Pressure Pump

Light and effective double acting high pressure air operated pumps specially designed for use in small mobile and portable greasing units.

Pumps are available with three different suction tube lengths: 35 lb, 120 lb and 400 lb. They include a height adjustable 2" NPT(M) bung adaptor.

Reliable air motor

Well proven air motor with 3" effective piston diameter air motor, minimum air consumption

Double acting pump

Provides even and smooth fluid flow

Long life packings

Low friction, dual packing step-seals provides longer trouble-free operation

High quality materials

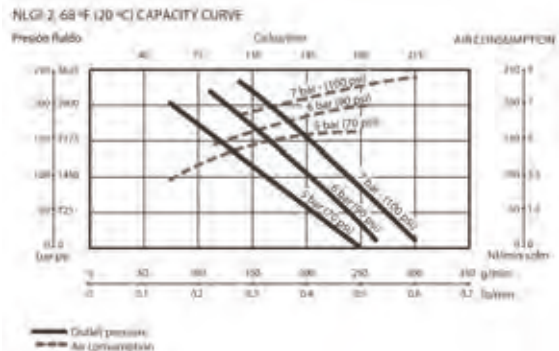
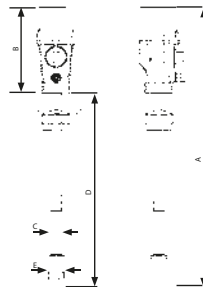
Barrel, piston and foot valve are made of hardened, precision fitted ground steel for perfect seal and long life

MARKETS SERVED

- Agriculture
- Service shops
- Light industrial

FLUIDS HANDLED

- Grease up to NLGI-2



IN(MM)	300	302	304
A	24" (610)	36 1/2" (925)	44" (1.120)
B	8" (200)	8" (200)	8" (200)
C	1" (26)	1" (26)	1" (26)
D	16" (410)	28 1/2" (725)	36" (920)

TECHNICAL SPECIFICATIONS

Pump ratio	55:1
Air pressure operating range	40 to 140 psi (3 to 10 bar)
Air consumption ⁽¹⁾	5.8 scfm (165 NL/min)
Maximum fluid outlet pressure	7,700 psi (550 bar)
Air motor diameter	3" (70 mm)
Air motor stroke	1 1/2" (35 mm)
Delivery at 110 cpm	0.7 lb/min (300 g/min)
Maximum free flow delivery ⁽²⁾	1.3 lb/min (600 g/min)
Air inlet	1/4" NPT(F)
Fluid outlet	1/4" NPT(F)
Wetted materials	Steel / Buna-N / PTFE / Zinc
Noise level	Pump noise level meets OSHA requirements at all recommended operating air pressures
Manual	840 803


(1) Maximum air consumption with 90 psi (6 bar) air inlet pressure, NLGI-2 grease at 68 °F (20 °C) and 110 cpm.

(2) Maximum free delivery at 100 psi (7 bar) NLGI-2 grease.


ORDER INFORMATION

300	PM3 55:1 35 lb pail with bung adaptor
302	PM3 55:1 120 lb keg with bung adaptor
304	PM3 55:1 400 lb drum with bung adaptor

Drum Covers

	1934	Heavy-duty 35 lb Pail cover
	1936	Heavy-duty 120 lb Keg cover
	1938	Heavy-duty 400 lb Drum cover

Follower Plate

	962	35 lb Follower plate
	964	120 lb Follower plate
	966	400 lb Follower plate